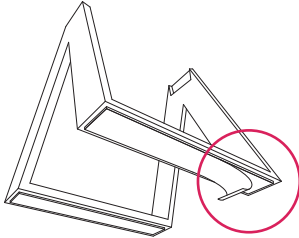


## TIPS & TRICKS

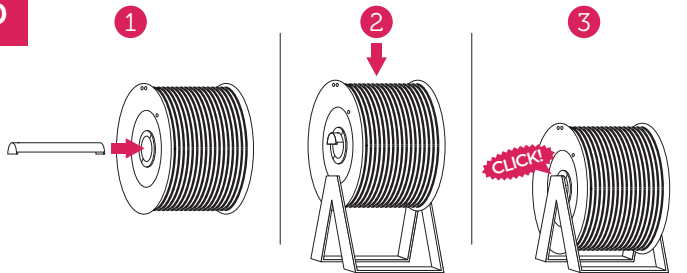
a



### THE SPOOL HOLDER

Use the tape at the bottom of the support to fix it on your desk. In this way the spool will stay stable on the desk. The tape doesn't leave any residuals, doesn't damage surfaces and can be attached and detached several times.

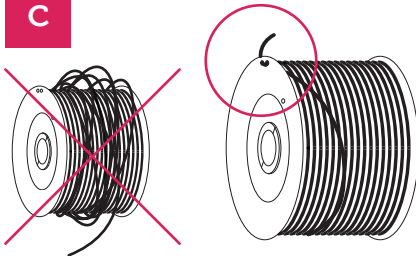
b



### SPOOL ASSEMBLY

Insert the bracket given inside the spool and fix it steadily on the support.

c



### AVOID ENTANGLEMENT

Always remember to pull the filament and fix it to the dedicated holes once you finish printing. In this way you'll avoid tedious overlaps that can cause filament breakage.

d

### PRINTING TEMPERATURE



Do some printing test within the temperature range indicated on the box and find the ideal settings for your printer.



### ATTENTION

In order to avoid the opening of the spool during the use, please do not remove any pieces until filament is finished.

**EUMAKERS**  
the world has a new dimension

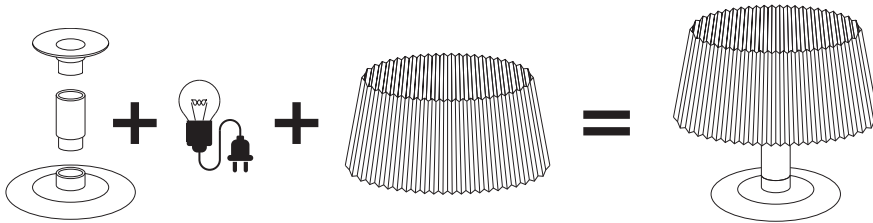
Presents...

eumakeit

We are pleased to present our new project: eumakeit!  
Unleash your creativity with “HACKING THE SPOOL” and “DESIGN LAB”

## HACKING THE SPOOL

VISIT OUR WEBSITE AND FIND OUT HOW TO REUSE THE  
SPOOL TO CREATE LAMPS, TABLET SUPPORTS, AND MORE...!



## DESIGN LAB

FOR YOU, MANY FREE FILES MADE BY THE BEST  
DESIGNERS TO CREATE YOUR FAVORITE OBJECTS.

For hints and advices write us at: [customercare@eumakers.com](mailto:customercare@eumakers.com).  
Thanks for buying our filaments and...happy 3D printing!

[www.eumakers.com](http://www.eumakers.com)